



MODEL  
2040

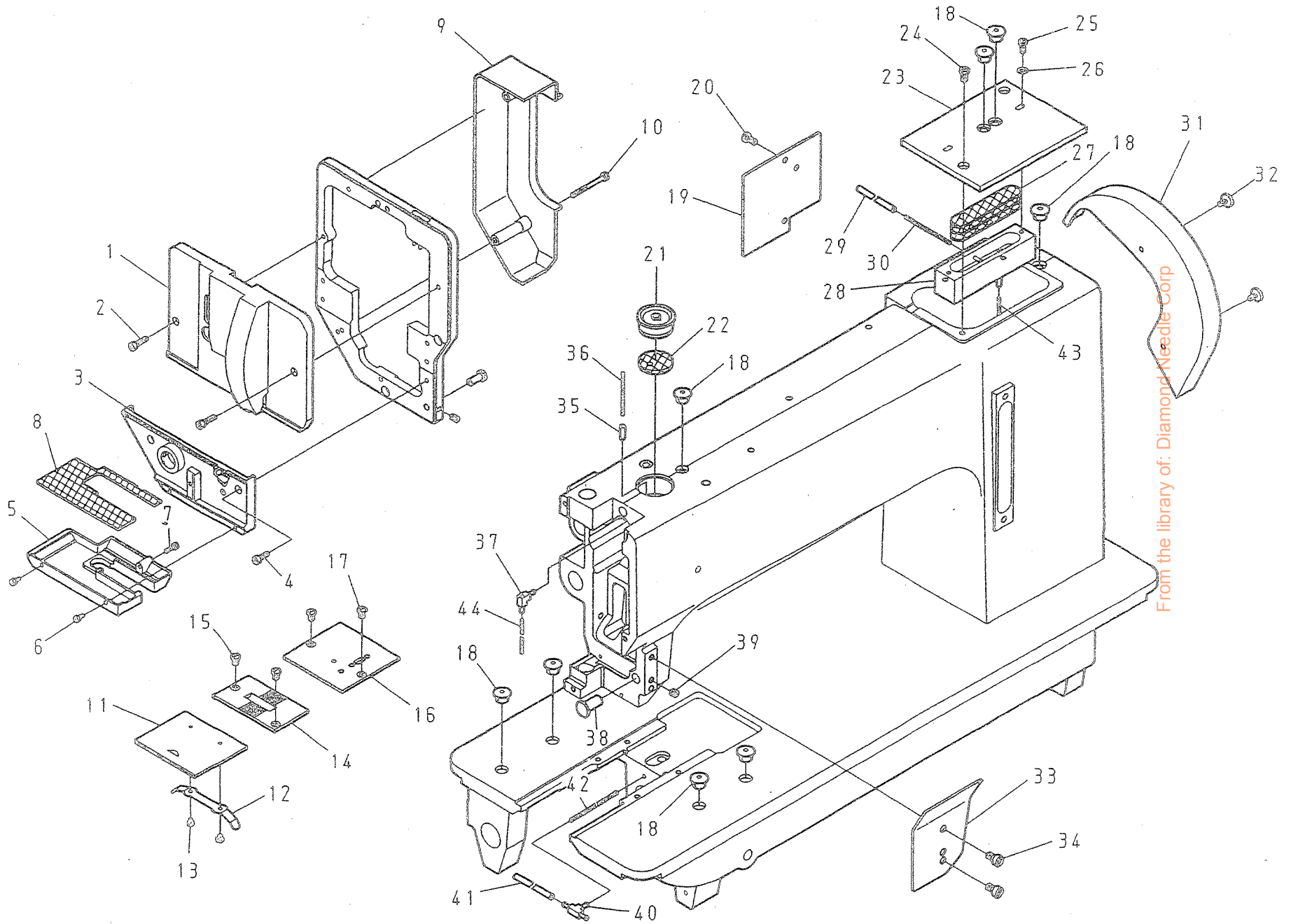
PARTS BOOK

MODEL : 2040

目次	CONTENT	PAGE
A. 本體關係	FRAME & MISCELLANEOUS COVER COMPONENTS	2-3
B. 上軸關係	MAIN SHAFT COMPONENTS	4-5
C. 針棒·天秤關係	NEEDLE BAR & THREAD TAKE-UP LEVER COMPONENTS	6-7
D. 針棒搖擺關係	NEEDLE BAR ROCKING MOTION MECHANISM COMPONENTS	8-9
E. 上部送料關係	UPPER FEED MECHANISM COMPONENTS	10-11
F. 押脚·脚弓關係	PRESSURE BAR & KNEE LIFTER COMPONENTS	12-13
G. 下部送料關係	LOWER FEED MECHANISM COMPONENTS	14-15
H. 縫目調整關係	FEED ADJUSTMENT MECHANISM COMPONENTS	16-17
I. 下軸關係	HOOK DRIVE SHAFT COMPONENTS	18-21
J. 縫線壓力調節關係	UPPER THREAD TENSION REGULATOR MECHANISM COMPONENTS	22-23
K. 附件	ACCESSORIES	24-25
L. 皮帶蓋關係	BELT COVER COMPONENTS	26-27
M. 零件號碼與頁數對照表	NUMERICAL PARTS—LIST	28-30

From the library of: Diamond Needle Corp

A. 2040 本體關係 FRAME & MISCELLANEOUS COVER COMPONENTS



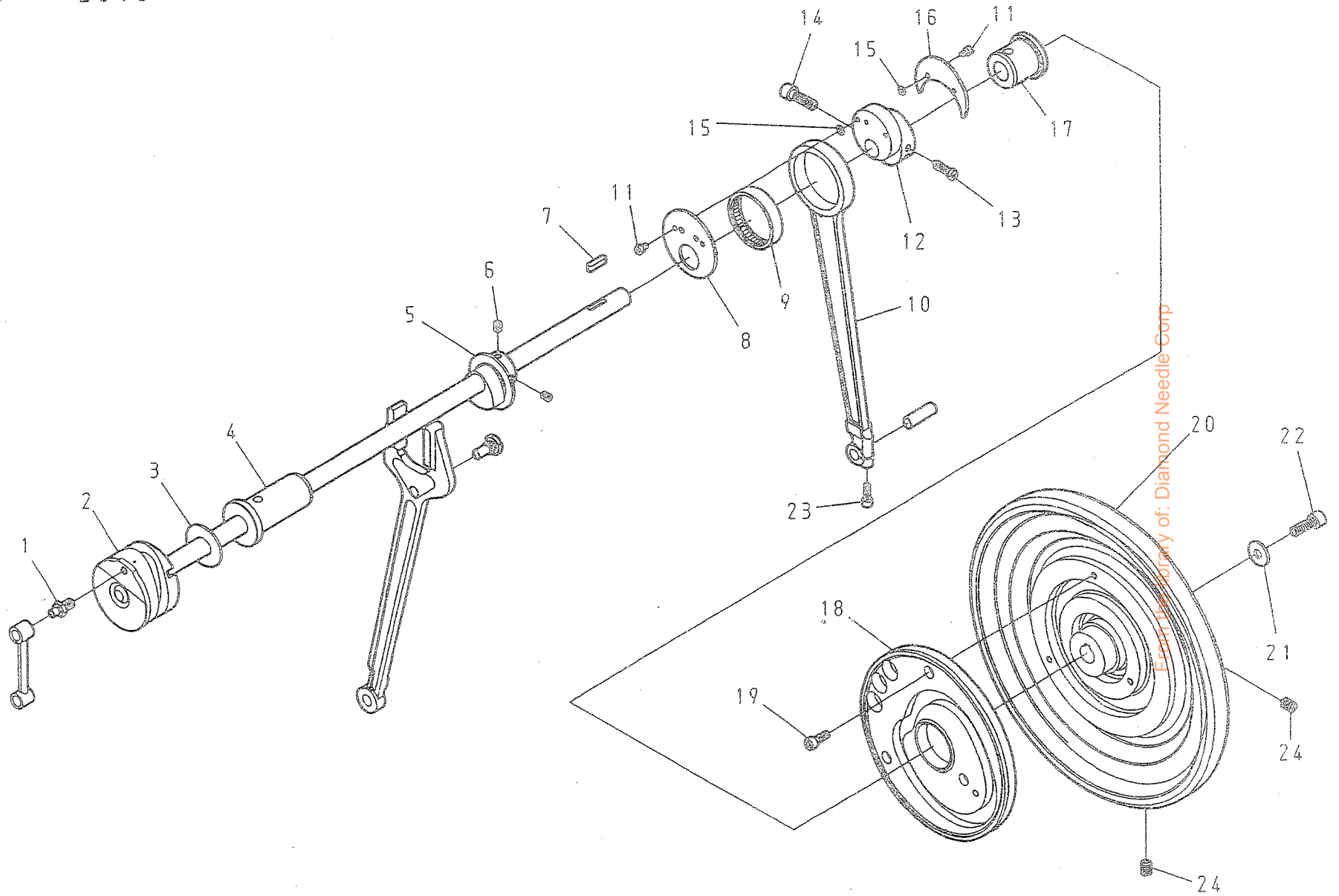
From the library of: Diamond Needle Corp

A. 2040 本體關係 FRAME & MISCELLANEOUS COVER COMPONENTS

REF.No	NOTE	零件號碼 Part No.	零件名稱 Name of Part	件數 QTY	備註 Remarks
1		2040111000	面板	1	
2		ZMJ04003	螺絲	2	
3		2040110900	面板(下)	1	
4		ZMJ04005	螺絲	2	
5		2040351900	保護塵蓋	1	
6		ZMJ03010	螺絲	2	
7		ZMJ03001	螺絲	1	
8		XB400063	油綿	1	
9		204011100C	保護蓋	1	
10		ZMJ04020	螺絲	2	
11		2040111800	角板	1	
12		2040111700	簧片	1	
13		ZMB03001	螺絲	2	
14		2040111300	針板	1	
15		ZMB05003	螺絲	2	
16		2040111600	角板(右)	1	
17		ZMB05003	螺絲	2	
18		A1077-0A	橡膠塞	8	
19		2040111200	橫蓋	1	
20		ZMB05004	螺絲	2	
21		2040350200	橡膠塞	1	
22		XB130001	油綿	1	
23		2040111100	上蓋	1	
24		ZMB05004	螺絲	2	
25		ZMB04016	螺絲	2	
26		WA049003	平整圈	2	
27		XB215001	油綿	3	
28		2040351504	油槽	1	
29		XP300200	油管線	1	
30		XA200400	油線	1	
31		2040335800	皮帶蓋	1	
32		ZMB04013	螺絲	2	
33		2040113100	橫蓋	1	
34		ZMJ06001	螺絲	2	
35		YD040014A	銷	1	
36		XA200280	油線	1	
37		2040353604	油管接頭	1	
38		2040270400	銷	1	
39		ZMH06008	螺絲	1	
40		2040353804	油管接頭	1	
41		XP300150	油管線	1	
42		XA200800	油線	1	
43		XA200180	油線	1	
44		XA200150	油線	1	

From the library of: Diamond Needle Corp

B. 2040 上軸圖係 MAIN SHAFT COMPONENTS



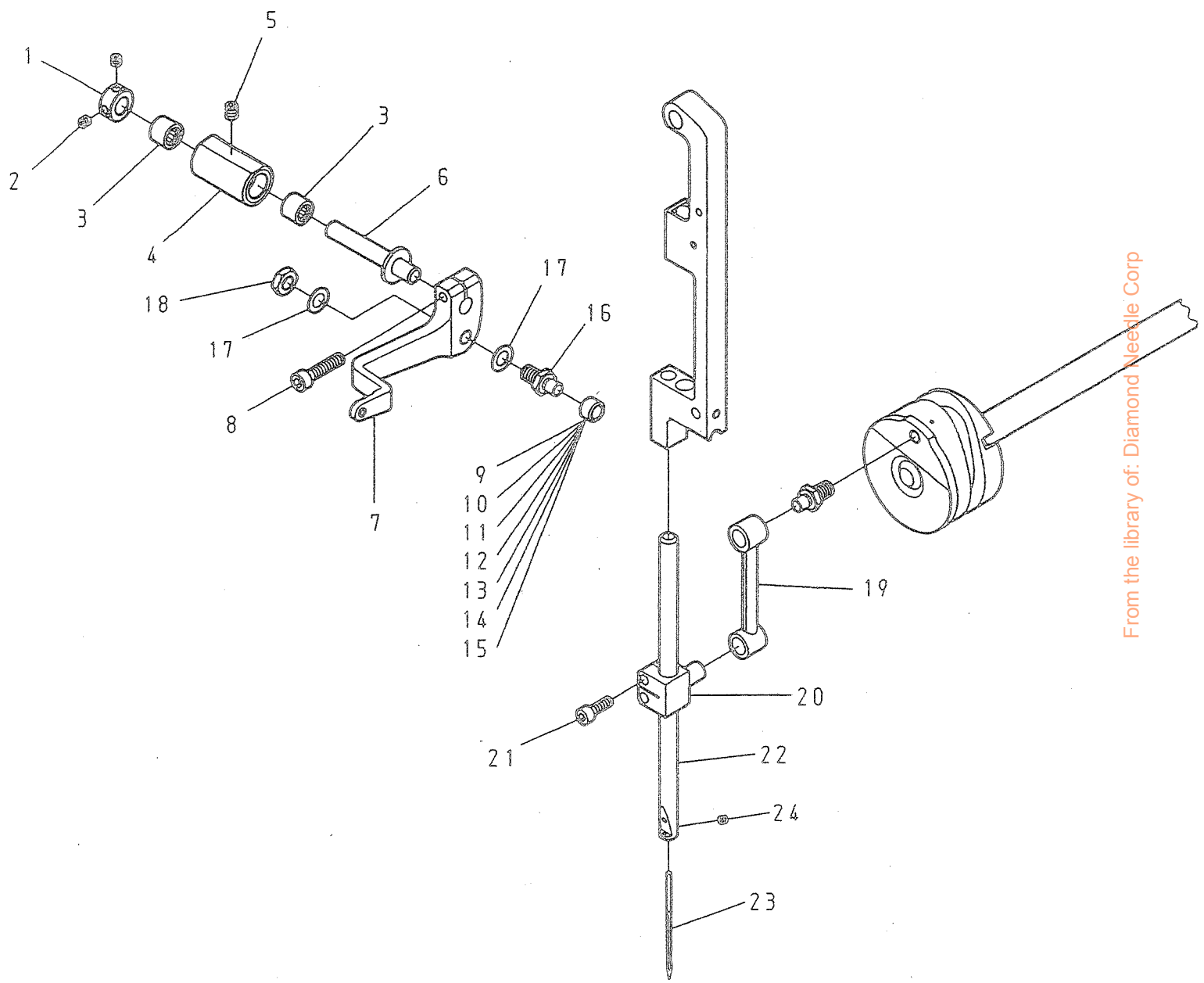
From the Library of: Diamond Needle Corp

B. 2040 上軸關係 MAIN SHAFT COMPONENTS

REF.No	NOTE	零件號碼 Part No.	零件名稱 Name of Part	件數 Q'TY	備註 Remarks
1		2040121300	針棒連接軸 ----- Needle Bar Crank Shaft -----	1	
2		2040120104	上軸(組) ----- Main Shaft Asm.-----	1	
3		WH216002	平墊圈 ----- Washer -----	1	
4		2040120200	上軸套管(左) ----- Main Shaft Bushing,Front -----	1	
5		2040122000	偏心輪 ----- Feed Cam -----	1	
6		ZMH06003	螺絲 ----- Screw M6X1.0*8 -----	2	
7		KC0305520	鑰 ----- Key -----	1	
8		204018200A	側板 ----- Side Plate -----	1	
9		BNHK4512	軸承 ----- Needle Bearing -----	1	
10		2040181800	動桿 ----- Connecting Rod -----	1	
11		ZMJ04008	螺絲 ----- Screw M4X0.7*6 -----	4	
12		2040181900	偏心輪 ----- Con-Rod Eccentric Cam -----	1	
13		ZMB06020	螺絲 ----- Screw M6X1.0*22 -----	1	
14		ZMJ08011	螺絲 ----- Screw M8X0.75*25 -----	1	
15		WA040026	平墊圈 ----- Washer -----	4	
16		204018200B	側板 ----- Side Plate -----	1	
17		2040120400	上軸套管(右) ----- Main Shaft Bushing,Rear -----	1	
18		2040144400	偏心輪 ----- Driving Cam -----	1	
19		ZMJ06009	螺絲 ----- Screw M6X1.0*18 -----	3	
20		2040122300	皮帶輪 ----- Hand Wheel -----	1	
21		WA089004	平墊圈 ----- Washer -----	1	
22		ZMJ08003	螺絲 ----- Screw M8X1.25*22 -----	1	
23		ZMJ05003	螺絲 ----- Screw M5X0.8*15 -----	1	
24		ZMH08002	螺絲 ----- Screw M8X1.25*12 -----	2	

From the library of: Diamond Needle Corp

C. 2040 針棒・天秤關係 NEEDLE BAR & THREAD TAKE-UP LEVER COMPONENTS



From the library of: Diamond Needle Corp

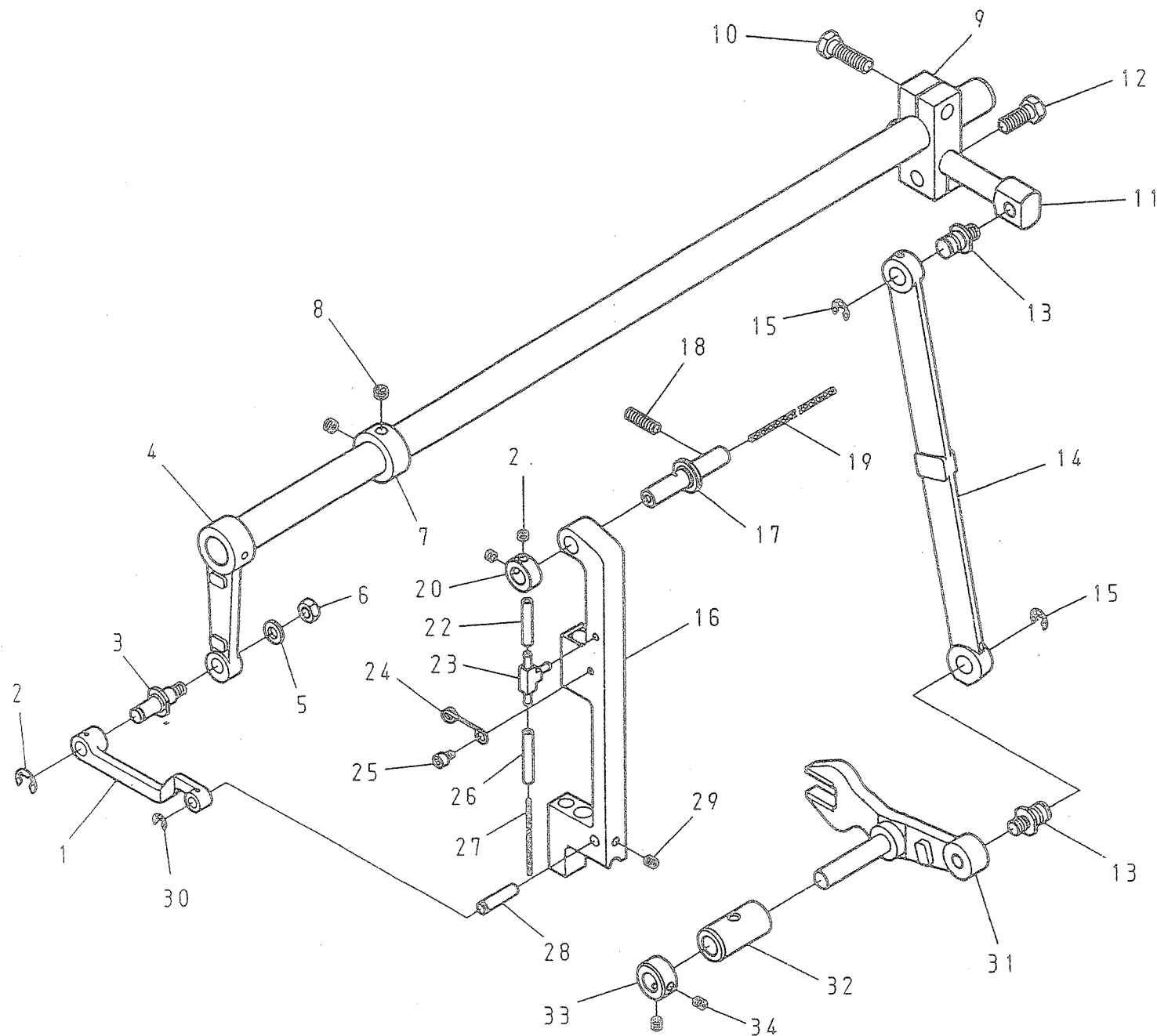
C. 2040 針棒・天秤關係 NEEDLE BAR & THREAD TAKE-UP LEVER COMPONENTS

REF.No	NOTE	零件號碼 Part No.	零件名稱	Name of Part	件數 Q'TY	備註 Remarks
1		TC09008200	定環	Thrust Collar	1	
2		ZMH05001	螺絲	Screw M5X0.8*5	2	
3		BNHK0910B	軸承	Needle Bearing	2	
4		2040192300	套管	Bushing	1	
5		ZMH06003	螺絲	Screw M6X1.0*8	1	
6		2040192100	軸	Shaft	1	
7		2040190104	天秤(結合)	Thread Take Up Lever Com.	1	
8		ZMJ05017	螺絲	Screw M5X0.8*25	1	
9	#01	2040190210	滾仔	Roller	(1)	
10	#01	2040190220	滾仔	Roller	(1)	
11		2040190230	滾仔	Roller	1	
12	#01	2040190240	滾仔	Roller	(1)	
13	#01	2040190250	滾仔	Roller	(1)	
14	#01	2040190260	滾仔	Roller	(1)	
15	#01	2040190270	滾仔	Roller	(1)	
16		2040190300	滾仔固定軸	Roller Stud	1	
17		WA080022	平墊圈	Washer	2	
18		ZML08004	螺帽	Nut M8X1.25	1	
19		2040121000	針棒連接器	Needle Bar Crank Rod	1	
20		2040140900	針棒鉗	Needle Bar Connection	1	
21		ZMJ05003	螺絲	Screw M5X0.8*15	2	
22		2040140100	針棒	Needle Bar	1	
23		IN794#200	針	Needle (794 Nm=200)	1	
24		ZMH04017	螺絲	Screw M4X0.5*4	1	

Note(注記)#01----- Selective parts 選択部品



D. 2040 針桿搖擺關係 NEEDLE BAR ROCKING MOTION MECHANISM COMPONENTS



From the library of: Diamond Needle Corp

D. 2040 針棒搖擺關係 NEEDLE BAR ROCKING MOTION MECHANISM COMPONENTS

REF.No	NOTE	零件號碼 Part No.	零件名稱 Name of Part	件數 QTY	備註 Remarks
1		2040143100	搖軸連桿 --- Rod ---	1	
2		RE000070	E扣環 7 --- Retaining Rings- E Type 7 ---	1	
3		ZMK06025	螺絲 --- Hinge Screw ---	1	
4		2040142304	中軸連桿(前)(結合) --- Driving Shaft Rod, Rear Com. ---	1	
5		WA06008	平墊圈 --- Washer ---	1	
6		ZML06001	螺帽 --- Nut M6X1.0 ---	1	
7		LG4043-0A	定環 --- Thrust Collar ---	1	
8		ZSA16010	螺絲 --- Screw 1/4-40*4.5 ---	2	
9		4410142400	中軸連桿(後) --- Driving Shaft Rod, Rear ---	1	
10		ZSD20009	螺絲 --- Screw 5/16-18*25 ---	1	
11		2040141900	中軸連桿銷(後) --- Driving Shaft Rear Arm Pin ---	1	
12		ZSD20011	螺絲 --- Screw 5/16-18*19 ---	1	
13		ZMK08016	螺絲 --- Hinge Screw ---	2	
14		2040271100	連桿 --- Lengthwise Feed Rod ---	1	
15		RE000080	E扣環 8 --- Retaining Rings- E Type 8 ---	2	
16		2040270100	針棒座 --- Frame Driving Base ---	1	
17		2040270200	針棒座軸 --- Frame Driving Base Shaft ---	1	
18		ZMH06016	螺絲 --- Screw M6X1.0*20 ---	1	
19		XA200300	油線 --- Oil Wick ---	1	
20		TC09508200	定環 --- Thrust Collar ---	1	
21		ZMH05006	螺絲 --- Screw M5X0.8*4 ---	2	
22		XP300045	油管線 --- Oil Tube ---	1	
23		2040353804	油管接頭 --- Oil Pipe Joint ---	1	
24		2040352900	油管支持片 --- Pipe Holder ---	1	
25		ZMJ04008	螺絲 --- Screw M4X0.7*6 ---	1	
26		XP300055	油管線 --- Oil Tube ---	1	
27		XA300460	油線 --- Oil Wick ---	1	
28		2040271300	銷 --- Pin ---	1	
29		ZMH05002	螺絲 --- Screw M5X0.8*6 ---	1	
30		RE000040	E扣環 4 --- Retaining Rings- E Type 4 ---	1	
31		2040169204	送料台柄 --- Feed Connection Crank ---	1	
32		2040273000	套管 --- Bushing ---	1	
33		TC10010200	定環 --- Thrust Collar ---	1	
34		ZMH05002	螺絲 --- Screw M5X0.8*6 ---	2	

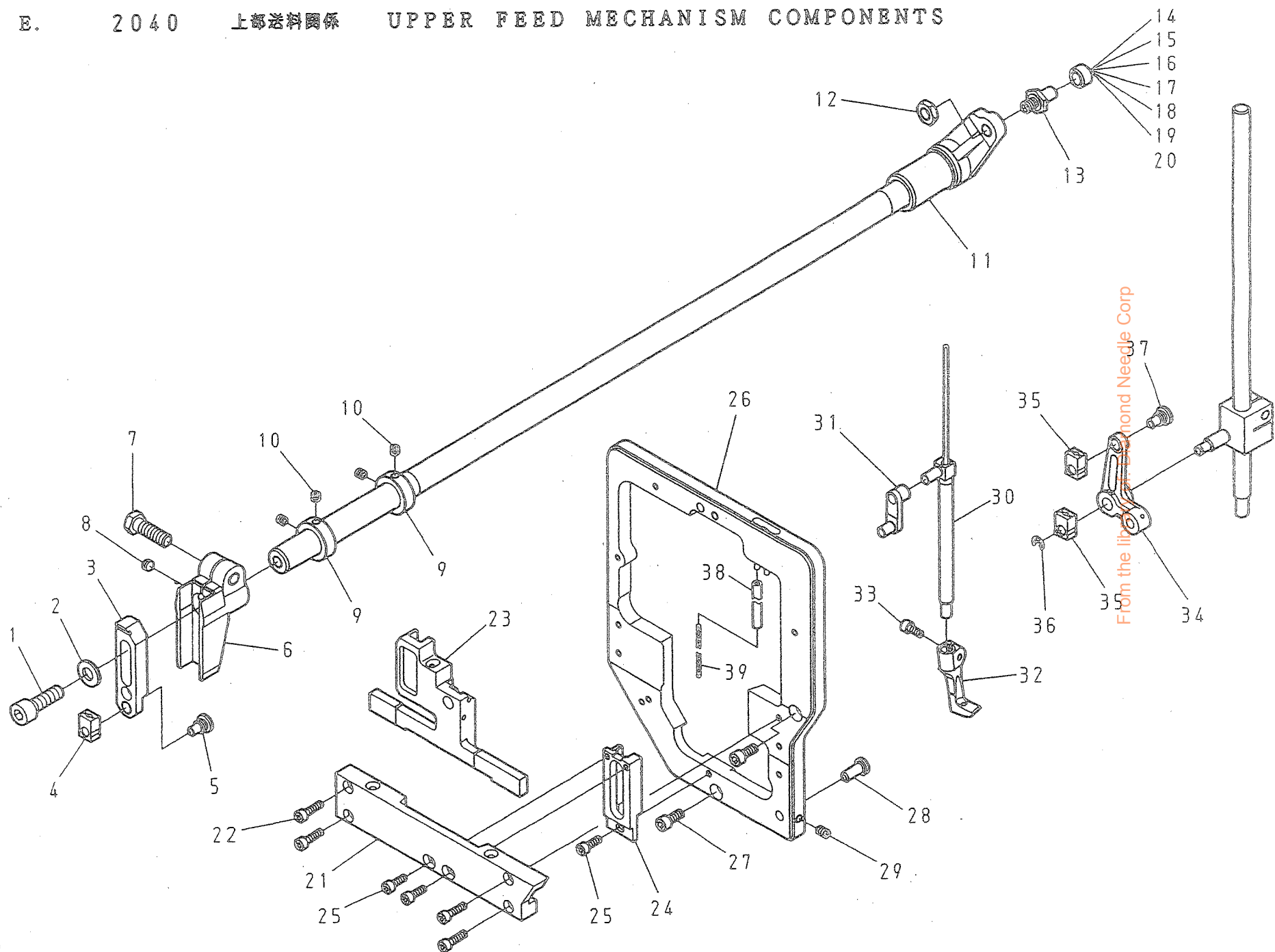
From the library of: Diamond Needle Corp

E.

2040

上級送料機構

UPPER FEED MECHANISM COMPONENTS



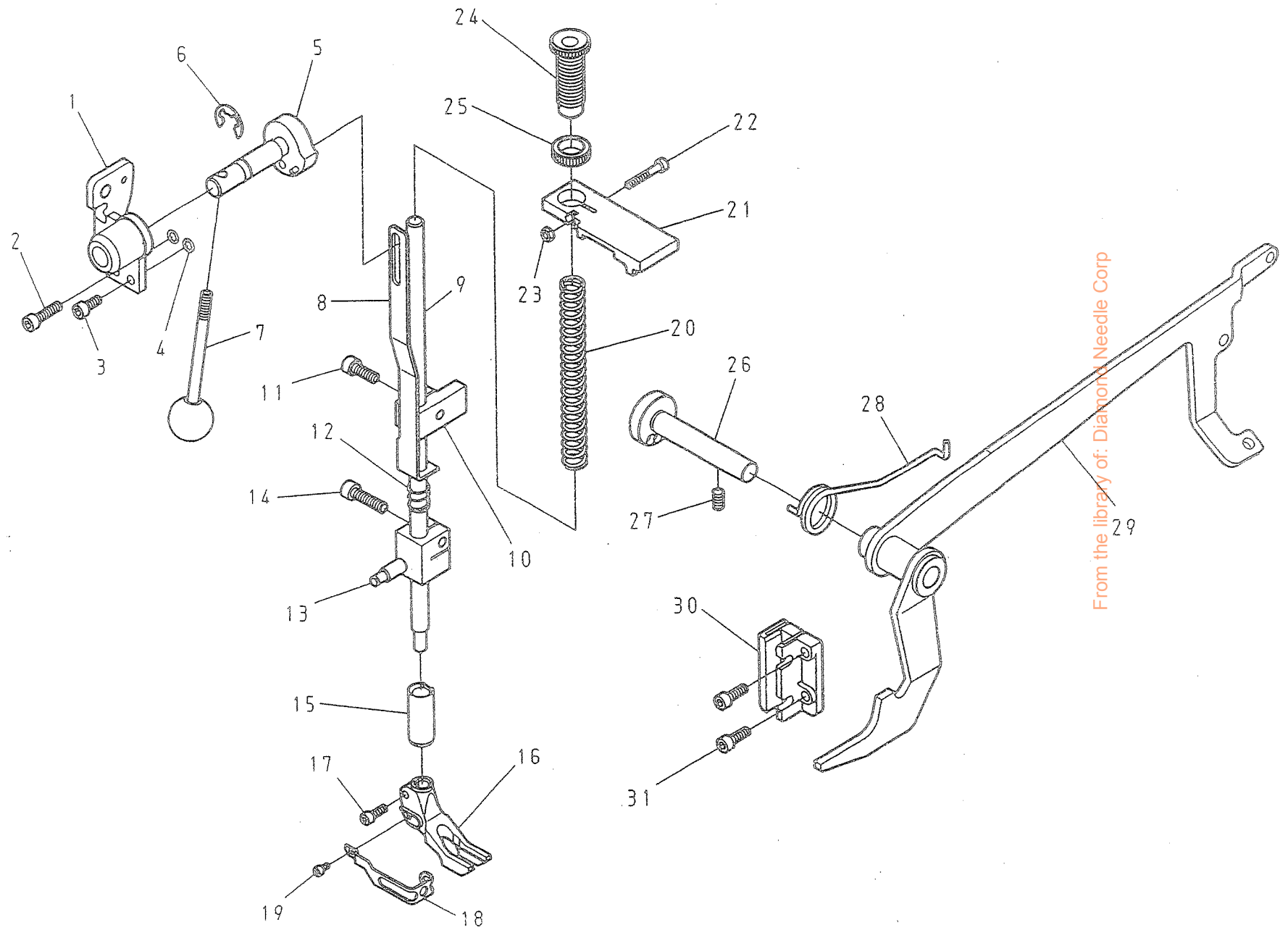
E. 2040 上部送料關係 UPPER FEED MECHANISM COMPONENTS

REF.No	NOTE	零件號碼 Part No.	零件名稱 Name of Part	件數 Q'TY	備註 Remarks
1		ZMJ08006	螺絲 ----- Screw M8X1.25*25 -----	1	
2		WA080007	平墊圈 ----- Washer -----	1	
3		2040142700	滑塊 ----- Slide Brock -----	1	
4		2040148000	滑塊 ----- Slide Brock -----	1	
5		ZMB08005	螺絲 ----- Hinge Screw -----	1	
6		2040144600	上送軸柄 ----- Driving Shaft Arm,Front -----	1	
7		ZSD20009	螺絲 ----- Screw 5/16-18*25 -----	1	
8		ZSA16020	螺絲 ----- Screw 1/4-40*5.5 -----	1	
9		TC16008200	定環 ----- Thrust Collar -----	1	
10		ZMH05001	螺絲 ----- Screw M5X0.8*5 -----	2	
11		2040144704	上送軸曲柄(結合) --- Driving Shaft Arm,Rear Com. ---	4	
12		ZML08004	螺帽 ----- Nut M8 x 1.25 -----	1	
13		ZMK08017	滾仔固定軸 ----- Roller Stud -----	1	
14	#01	2040145410	滾仔 ----- Roller -----	1	
15	#01	2040145420	滾仔 ----- Roller -----	(1)	
16		2040145430	滾仔 ----- Roller -----	(1)	
17	#01	2040145440	滾仔 ----- Roller -----	1	
18	#01	2040145450	滾仔 ----- Roller -----	(1)	
19	#01	2040145460	滾仔 ----- Roller -----	(1)	
20	#01	2040145470	滾仔 ----- Roller -----	(1)	
21		2040142500	導板 ----- Guide Plate -----	(1)	
22		ZMJ04003	螺絲 ----- Screw M4X0.7*15 -----	1	
23		2040142900	滑塊 ----- Slide Brock -----	4	
24		2040151100	導板 ----- Guide Plate -----	1	
25		ZMJ04005	螺絲 ----- Screw M4X0.7*12 -----	1	
26		2040110604	面板土台(結合) --- Face Plate Base Com. ---	3	
27		ZMJ05002	螺絲 ----- Screw M5X0.8*12 -----	1	
28		2040143700	銷 ----- Pin -----	2	
29		ZMH05003	螺絲 ----- Screw M5X0.8*8 -----	1	
30		2040141704	中腳押棒(結合) --- Vibrating Presser Bar Com. ---	1	
31		2040143300	押腳舉升連桿 --- Vibrating Presser Bar Link ---	1	
32		2040151000	內壓腳 ----- Walking Foot -----	1	
33		ZMJ04002	螺絲 ----- Screw M4X0.7*10 -----	1	
34		2040143600	舉升曲臂連桿 --- Lifting Bell Crank ---	1	
35		2040148000	滑塊 ----- Slide Brock -----	1	
36		RE000040	E扣環 4 ----- Retaining Rings- E Type 4 -----	2	
37		ZMB08005	螺絲 ----- Hinge Screw -----	1	
38		XP300100	油管線 ----- Oil Tube -----	1	
39		XA200360	油線 ----- Oil Wick -----	1	

Note(注記)#01 ----- Selective parts 選擇部品

From the library of: Diamond Needle Corp

F. 2040 押脚・脚弓鋼索 PRESSURE BAR & KNEE LIFTER COMPONENTS



F. 2040 押脚·脚弓關係 PRESSURE BAR & KNEE LIFTER COMPONENTS

REF.No	NOTE	零件號碼 Part No.	零件名稱 Name of Part	件數 Q'TY	備註 Remarks
1		2040157104	支持台(結合) --- Bracket Com. ---	1	
2		ZMJ05004	螺絲 --- Screw M5X0.8*20 ---	1	
3		ZMJ05002	螺絲 --- Screw M5X0.8*12 ---	1	
4		WA059006	平墊圈 --- Washer ---	2	
5		2040150704	押棒偏心軸(結合) --- Hand Lifter Cam Com. ---	1	
6		RE000100	E扣環 10 --- Retaining Rings- E Type 10 ---	1	
7		2040150804	押棒堤桿(結合) --- Hand Lifter Lever Com. ---	1	
8		2040340300	壓棒固定座 --- Hand Lifter Link ---	1	
9		2040150100	押棒 --- Presser Bar ---	1	
10		2040150500	押棒堤昇器 --- Presser Bar Lifter ---	1	
11		ZMJ06009	螺絲 --- Screw M6X1.0*18 ---	1	
12		2040340200	壓縮彈簧 --- Spring ---	1	
13		2040143500	舉升曲臂連桿土台 --- Lifting Bell Crank Base ---	1	
14		ZMJ06006	螺絲 --- Screw M6X1.0*23 ---	1	
15		2040150200	押棒套管 --- Bushing ---	1	
16		2040143800	外壓腳 --- Presser Foot ---	1	
17		ZMJ04005	螺絲 --- Screw M4X0.7*12 ---	1	
18		2040152500	保護板 --- Guard ---	1	
19		ZMJ03010	螺絲 --- Screw M3X0.5*6 ---	1	
20		2040150400	壓縮彈簧 --- Presser Spring ---	1	
21		2040159900	上蓋 --- Top Cover ---	1	
22		ZMJ04004	螺絲 --- Screw M4X0.7*25 ---	1	
23		ZML04006	螺帽 --- Nut M4X0.7 ---	1	
24		4710150300	螺絲 --- Screw ---	1	
25		4710151500	螺帽 --- Nut ---	1	
26		2040341700	軸 --- Shaft ---	1	
27		ZMH06023	螺絲 --- Screw M6X1.0*12 ---	1	
28		2040342300	彈簧 --- Spring ---	1	
29		2040150604	押脚抬高桿 --- Foot Lifter Lifting Lever ---	1	
30		2040151700	導板 --- Guide Plate ---	1	
31		ZMJ05003	螺絲 --- Screw M5X0.8*15 ---	2	

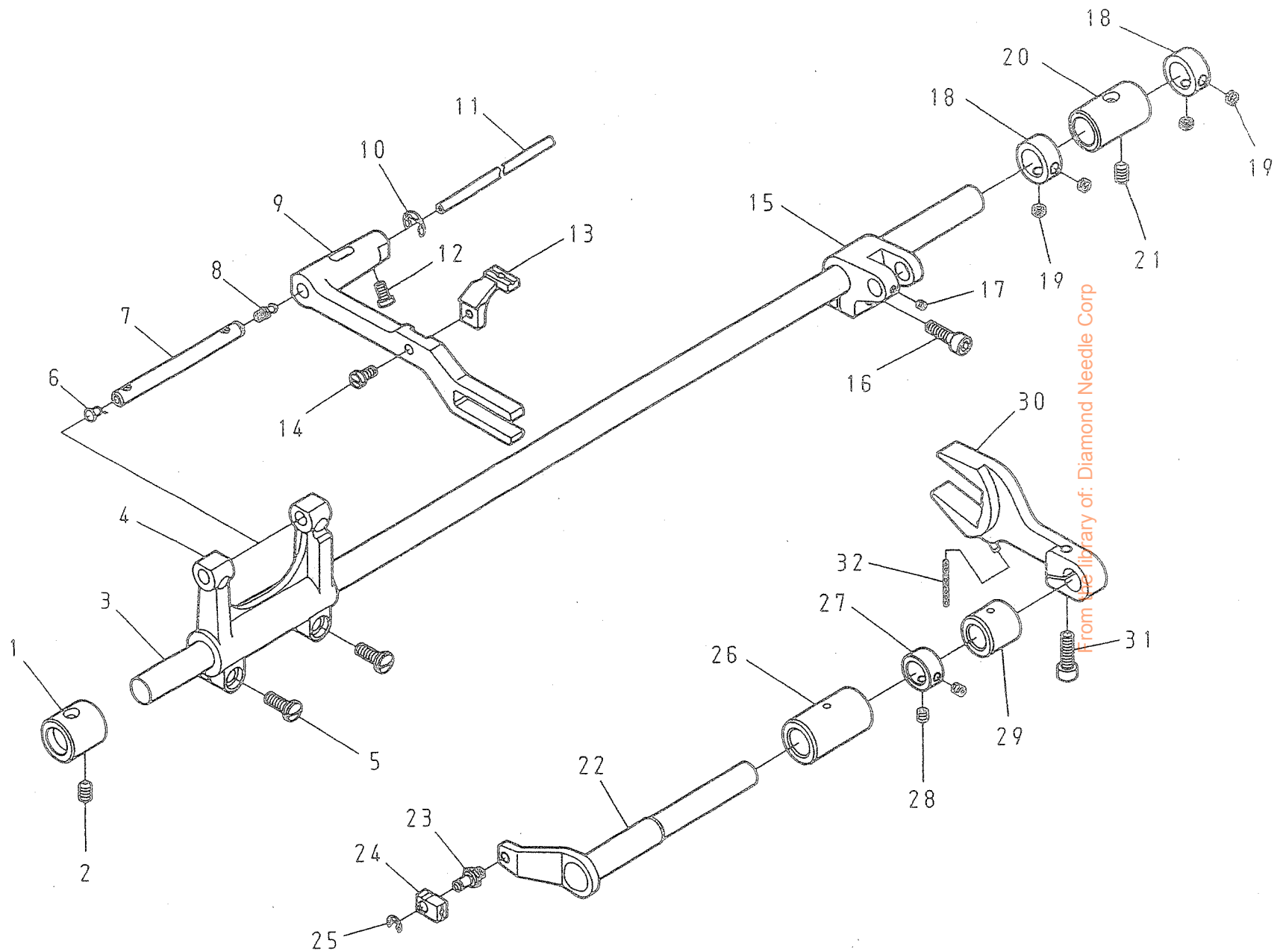
From the library of: Diamond Needle Corp

G.

2040

下部送料關係

LOWER FEED MECHANISM COMPONENTS



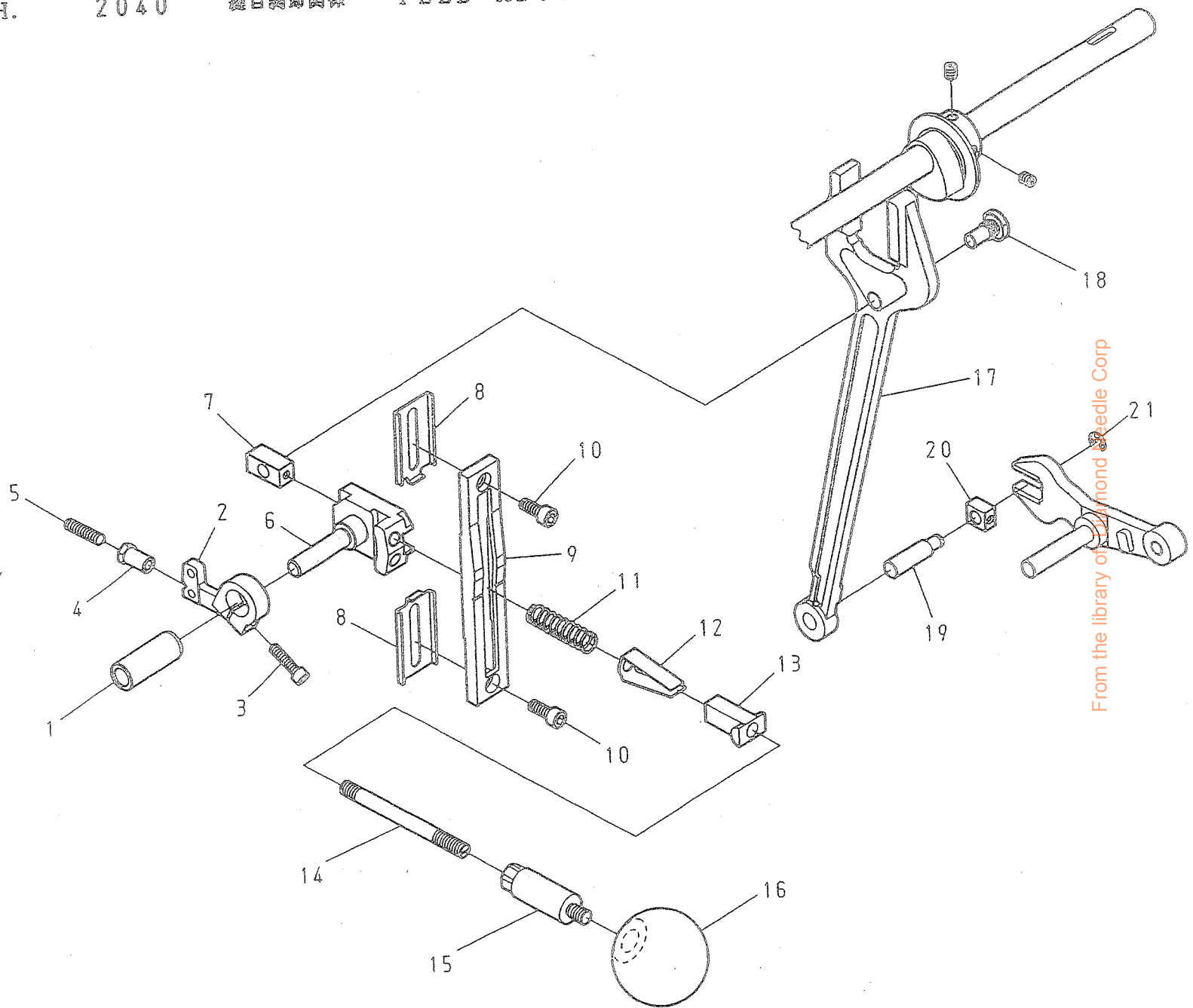
From the library of: Diamond Needle Corp

G. 2040 下部送料關係 LOWER FEED MECHANISM COMPONENTS

REF.No	NOTE	零件號碼 Part No.	零件名稱 Name of Part	件數 Q'TY	備註 Remarks
1		2040160600	搖動軸套管(前) ----- Bushing, Front -----	1	
2		ZMH06010	螺絲 ----- Screw M6X1.0*10 -----	1	
3		2430160400	搖動軸 ----- Feed Rocker Shaft -----	1	
4		2040160500	送料台適桿 ----- Feed Bar Rod -----	1	
5		ZSB16004	螺絲 ----- Screw 1/4-24*16 -----	2	
6		SEN0400600	橡膠塞 ----- Oil Cap -----	1	
7		2040164900	送料台軸 ----- Feed Bar Shaft -----	1	
8		2040354000	油管接頭 ----- Oil Pipe Joint -----	1	
9		2040160100	送料台 ----- Feed Bar -----	1	
10		RE000070	E扣環 7 ----- Retaining Rings- E Type 7 -----	1	
11		XP300120	油管線 ----- Oil Tube -----	1	
12		ZMB05012	螺絲 ----- Screw M5X0.8*9 -----	1	
13		2040161400	送料齒 ----- Feed dog -----	1	
14		ZMB05004	螺絲 ----- Screw M5X0.8*10 -----	1	
15		2040160800	搖動曲軸 ----- Feed Rocker Shaft Crank -----	1	
16		ZMJ06004	螺絲 ----- Screw M6X1.0*20 -----	1	
17		ZMA04005	螺絲 ----- Screw M4X0.7*4 -----	1	
18		LG4044-0A	定環 ----- Thrust Collar -----	2	
19		ZSA16029	螺絲 ----- Screw 1/4-40*3.5 -----	4	
20		2040160700	搖動軸套管(後) ----- Bushing, Rear -----	1	
21		ZMH06010	螺絲 ----- Screw M6X1.0*10 -----	1	
22		2040170304	送料軸(結合) ----- Feed Lifting Rock Shaft Com. -----	1	
23		ZMK06024	螺絲 ----- Hinge Screw -----	1	
24		2040148000	滑塊 ----- Slide Brock -----	1	
25		RE000040	E扣環 4 ----- Retaining Rings- E Type 4 -----	1	
26		2040171800	套管 ----- Bushing -----	1	
27		TC12710200	定環 ----- Thrust Collar -----	1	
28		ZMH05002	螺絲 ----- Screw M5X0.8*6 -----	2	
29		2040171900	套管 ----- Bushing -----	1	
30		2040170104	送料土台二又 ----- Feed Bar Forked Connection -----	1	
31		ZMJ06004	螺絲 ----- Screw M6X1.0*20 -----	1	
32		XA200046	油線 ----- Oil Wick -----	1	

From the library of: Diamond Needle Corp



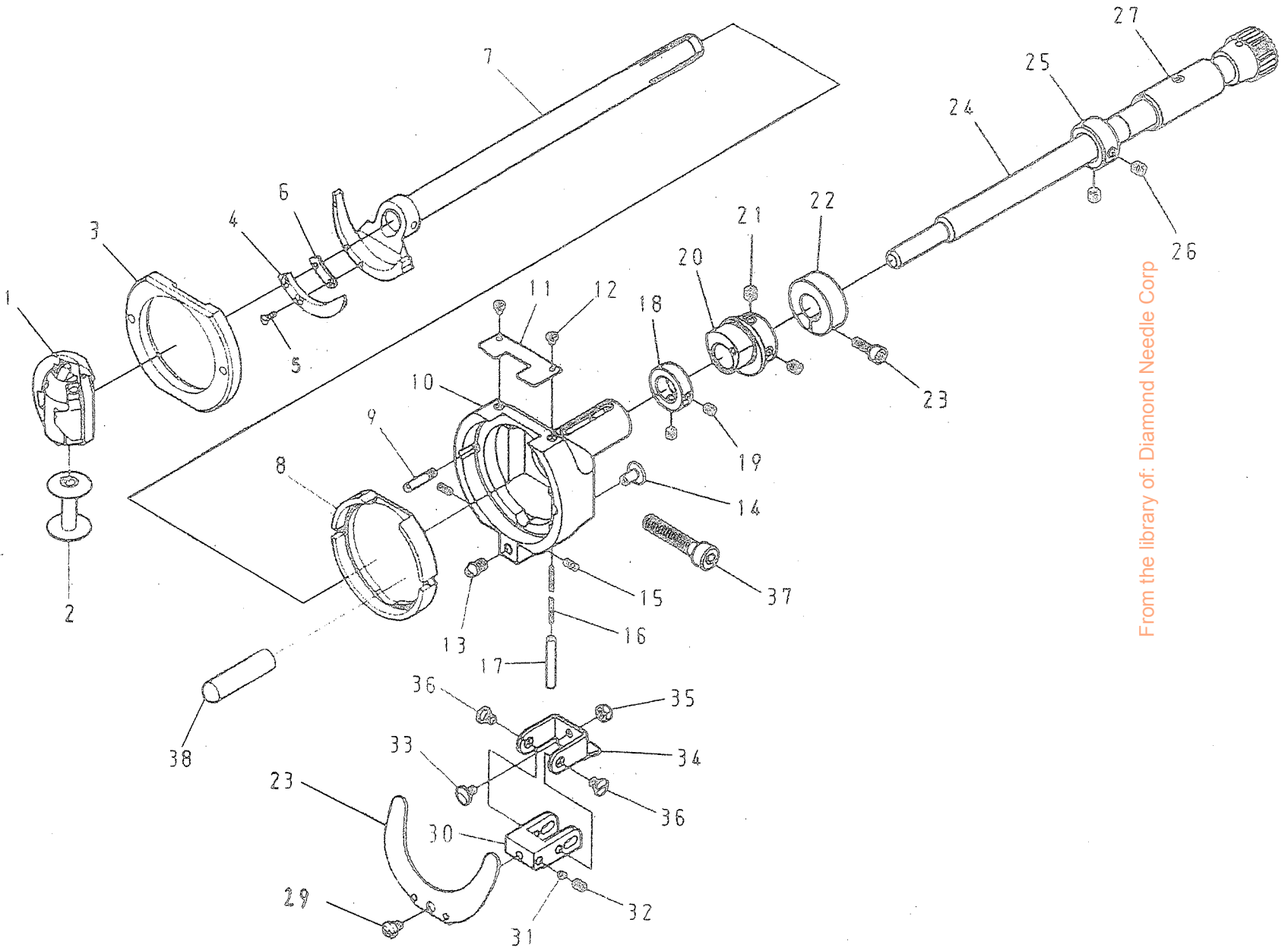


From the library of **Diamond Needle Corp**

H. 2040 縫目調節關係 FEED ADJUSTMENT MECHANISM COMPONENTS

REF.No	NOTE	零件號碼 Part No.	零件名稱 Name of Part	件數 Q'TY	備註 Remarks
1		2040167900	套管 ----- Bushing -----	1	
2		2040162200	送料調節桿 ----- Feed Regulator -----	1	
3		ZMJ05004	螺絲 ----- Screw M5X0.8*20 -----	1	
4		ZMR06005	螺帽 ----- Nut M6X1.0 -----	1	
5		ZMH06024	螺絲 ----- Screw M6X1.0*25 -----	1	
6		2040161104	送料調節桿(結合) ----- Feed Regulator Com. -----	1	
7		2040167200	滑塊 ----- Slide Brock -----	1	
8		2040164500	定位板 ----- Stopper Plate -----	2	
9		2040161300	刻度板 ----- Side Cover -----	1	
10		ZMJ06002	螺絲 ----- Screw M6X1.0*15 -----	2	
11		2040162000	彈簧 ----- Spring -----	1	
12		2040161900	簧片 ----- Leaf Spring -----	1	
13		2040162100	滑塊 ----- Slide Brock -----	1	
14		2040161800	縫目調整桿 ----- Lever Shaft -----	1	
15		2040161200	倒針槓桿 ----- Lever -----	1	
16		4710161600	調節桿握 ----- Lever Grip -----	1	
17		2040160900	連接叉桿 ----- Rod -----	1	
18		ZMB10002	螺絲 ----- Hinge Screw -----	1	
19		2040167600	軸 ----- Shaft -----	1	
20		2040169500	滑塊 ----- Slide Brock -----	1	
21		RE000050	E扣環 5 ----- Retaining Rings- E Type 5 -----	1	

I. 2040 下軸圖系 (1/2) HOOK DRIVE SHAFT COMPONENTS (1/2)



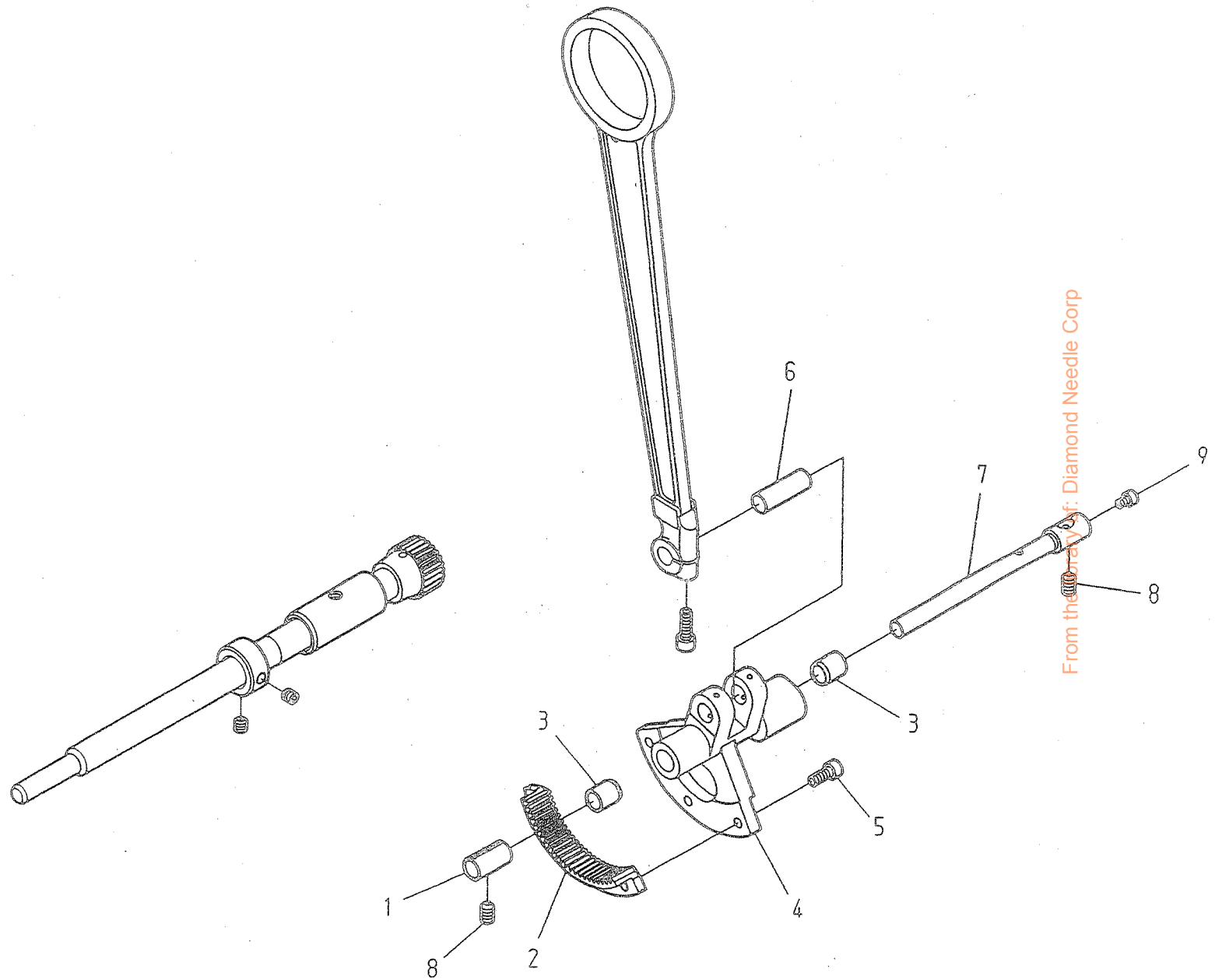
From the library of: Diamond Needle Corp

I. 2040 下軸關係 (1/2) HOOK DRIVE SHAFT COMPONENTS(1/2)

REF.No	NOTE	零件號碼 Part No.	零件名稱	Name of Part	件數 QTY	備註 Remarks
1		4710181300	梭頭	Hook Asm.	1	
2		4710183200	梭仔	Bobbin	1	
3		2040181400	梭頭蓋	Hook Cover	1	
4		2040189300	針筭內	Needle Guide	1	
5		ZMC03001	螺絲	Screw M3X0.5*8.5	2	
6		2040189420	定位保持板	Spacer	1	
7		2040181604	梭頭驅動柄(結合)	Shuttle Driver Com.	1	
8		2040184200	梭頭導環座	Shuttle Race Body	1	
9		ZSK11050	螺絲	Hinge Screw	2	
10		2040180300	下軸套管(左)	Bushing, Front	1	
11		2040184600	線導片	Shuttle Race Thread Guide	1	
12		ZMB03001	螺絲	Screw M3X0.5*8.5	2	
13		ZSB15055	螺絲	Screw 15/64-28*6.4	1	
14		2040184100	銷	Pin	1	
15		ZSB09091	螺絲	Screw 9/64-40*8	2	
16		XA200100	油線	Oil Wick	1	
17		XP300060	油管筒	Oil Tube	1	
18		TC14708200	定環	Thrust Collar	1	
19		ZMH05001	螺絲	Screw M5X0.8*5	2	
20		2040170900	送料圓心輪	Feed Lifting Rock Cam	1	
21		ZMH06008	螺絲	Screw M6X1.0*6	2	
22		2040186600	經手	Joint	1	
23		ZMJ05003	螺絲	Screw M5X0.8*15	1	
24		2040180704	齒輪(結合)	Lower Shaft Gear Com.	1	
25		TC14712200	定環	Thrust Collar	1	
26		ZMH06008	螺絲	Screw M6X1.0*6	2	
27		2040180500	下軸套管(右)	Bushing, Rear	1	
28		2040183800	簧片	Leaf Spring	1	
29		ZMB05027	螺絲	Screw M5X0.5*6.1	1	
30		2040184400	活動板	Hinge	1	
31		2040183500	銷	Pin	1	
32		ZMA05012	螺絲	Screw M5X0.5*6	1	
33		2040184500	銷	Pin	1	
34		2040184300	活動導板	Support	1	
35		ZSL11002	螺絲	Nut 11/64-40	1	
36		ZMG05023	螺絲	Hinge Screw	2	
37		ZMJ08010	螺絲	Screw M8X1.25*40	1	
38		YA040300	銷	Pin	1	

From the library of: Diamond Needle Corp

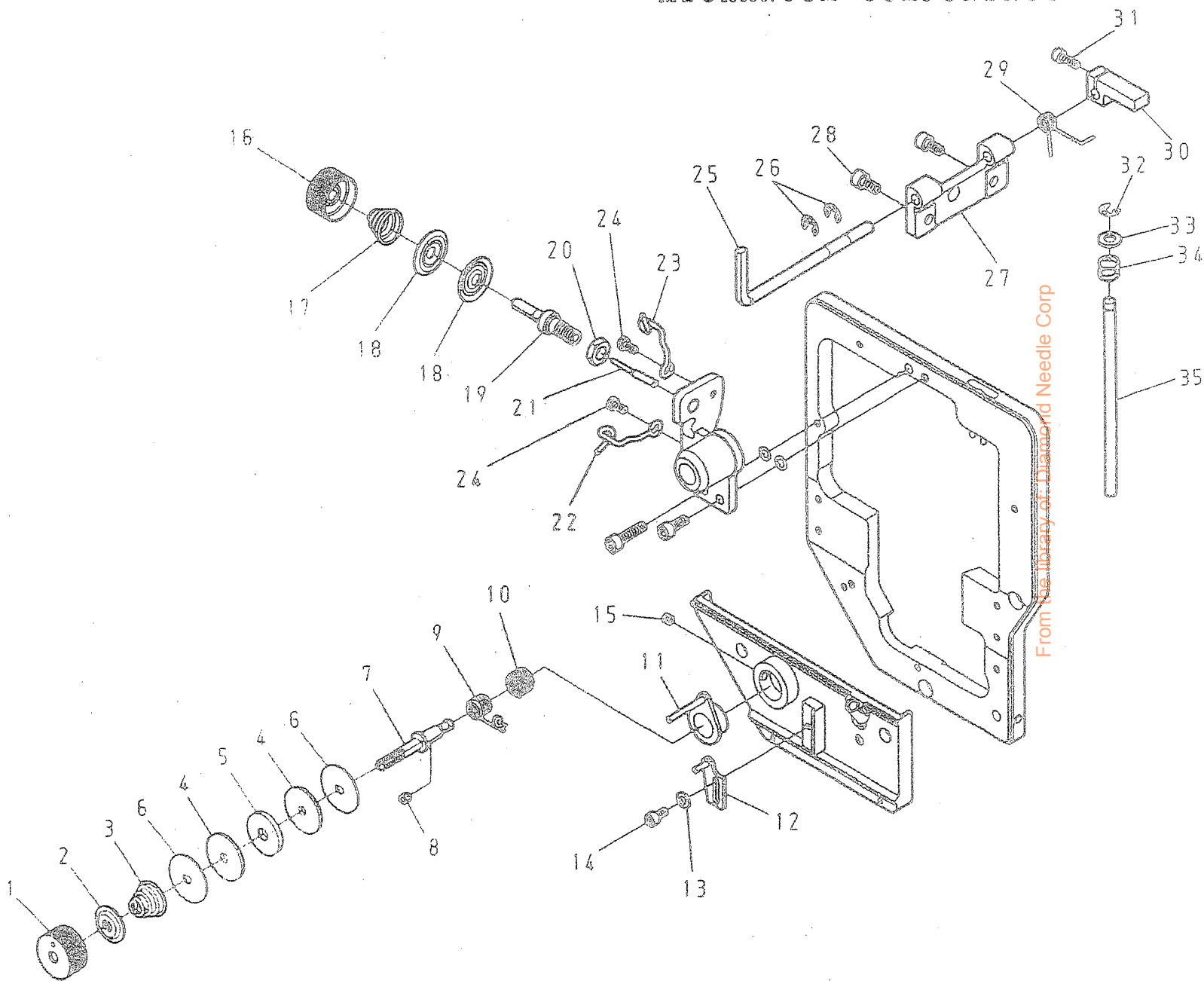
I. 2040 下轴關係 (2/2) HOOK DRIVE SHAFT COMPONENTS (2/2)



From the factory: Diamond Needle Corp

I. 2040 下軸關係 (2/2) HOOK DRIVE SHAFT COMPONENTS(2/2)

REF.No	NOTE	零件號碼 Part No.	零件名稱 Name of Part	件數 Q'TY	備註 Remarks
1		2040182400	套管 Bushing	1	
2		2040182500	齒輪 Rock Gear	1	
3		204018220A	套管 Bushing	1	
4		2040182200	搖動柄 Oscilating Rock Shaft	2	
5		ZMJ05002	螺絲 Screw M5X0,8*12	1	
6		2040183000	銷 Pin	3	
7		2040182300	軸 Shaft	1	
8		ZMH06010	螺絲 Screw M6X1.0*10	1	
9		ZMJ04008	螺絲 Screw M4X0,7*6	2	
				1	

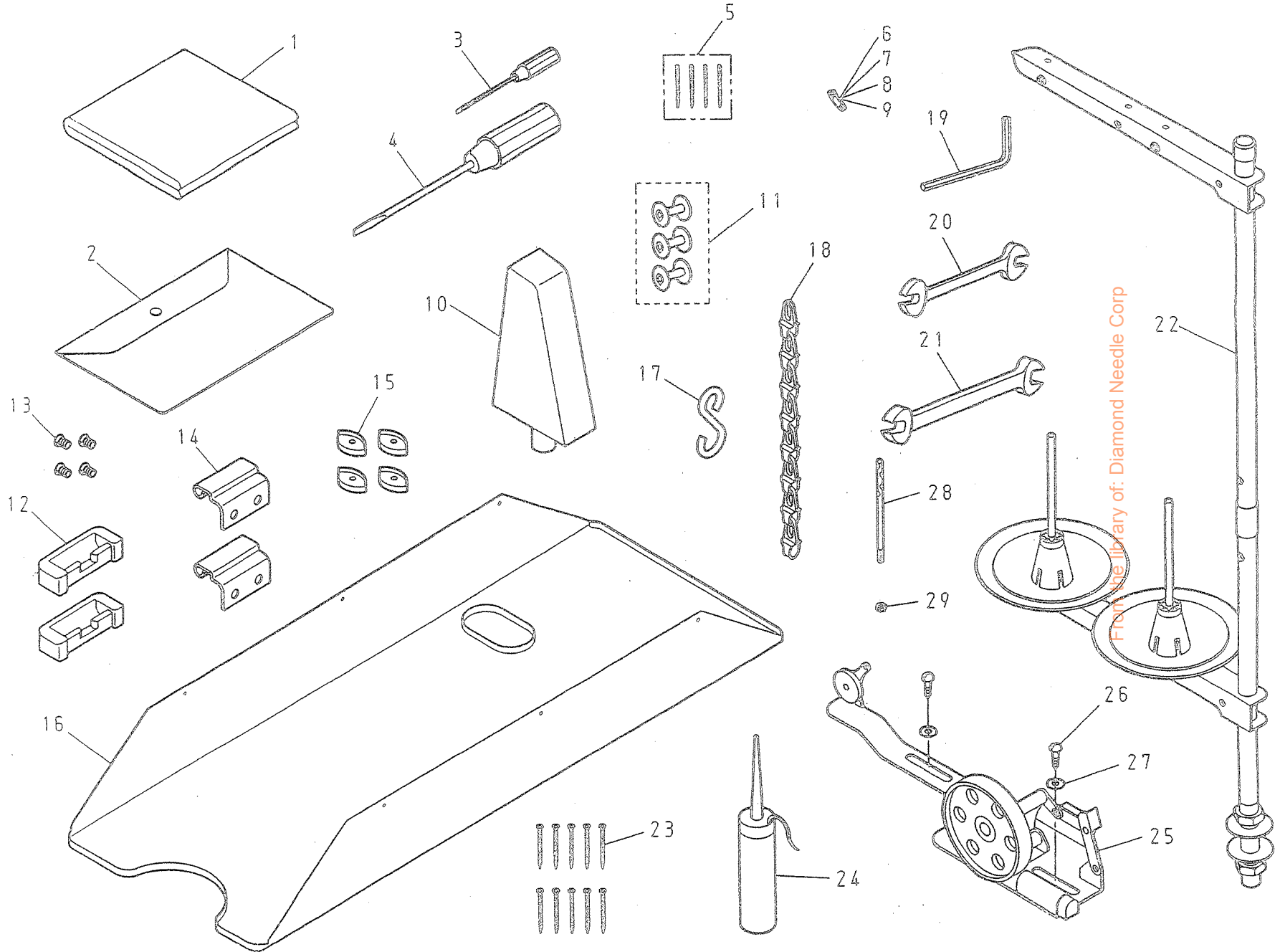


J. 2040 縫線壓力調節關係 UPPER THREAD TENSION REGULATOR MECHANISM COMPONENTS

REF.No	NOTE	零件號碼	零件名稱	Name of Part	件數	備註
		Part No.			Q'TY	Remarks
1		2040310300	螺帽	Nut	1	
2		2040315400	線調節壓盤	Tension Regulator Presser Disk	1	
3		2040310400	調節彈簧	Thread Tension Spring	1	
4		2040311300	棉環側盤	Felt Support Plate	2	
5		2040311200	調節線輪	Thread Tension Wheel	1	
6		2040311400	棉環側盤	Felt Support Plate	2	
7		2040311100	調節線絲桿	Thread Tension Wheel Post	1	
8		ZMH05001	螺絲	Screw M5X0.8*5	1	
9		2040310800	吊線彈簧	Spring A	1	
10		2040310900	吊線彈簧	Spring B	1	
11		2040310504	彈簧座(結合)	Thread Tension Post Bracket Com.	1	
12		2040311004	線盤彈簧調整器(結合)	Spring Support Plate Com.	1	
13		WA049003	平墊圈	Washer	1	
14		ZMJ04001	螺絲	Screw M4X0.7*8	1	
15		ZMH05001	螺絲	Screw M5X0.8*5	1	
16		2040310300	螺帽	Nut	1	
17		2040315800	調節彈簧	Thread Tension Spring	1	
18		A1025-0A	壓線盤	Tension Disk	2	
19		2040310100	調節線絲桿	Thread Tension Post	1	
20		ZML08004	螺帽	Nut M8X1.25	1	
21		2040312000	線線盤	Tension Releasing Pin	1	
22		2040310600	線掛	Thread Tension Guide	1	
23		2040310610	線掛	Thread Tension Guide	1	
24		ZMB04011	螺絲	Screw M4X0.7*8	2	
25		2040317100	鬆線導板	Tension Releasing Plate	1	
26		RE000050	E扣環 5	Retaining Rings- E Type 5	2	
27		2040317000	鬆線導座	Tension Releasing Base	1	
28		ZMJ05008	螺絲	Screw M5X0.8*10	2	
29		2040312300	彈簧	Spring	1	
30		2040317500	連桿	Link	1	
31		ZMJ04005	螺絲	Screw M4X0.7*12	1	
32		RE000050	E扣環 5	Retaining Rings- E Type 5	1	
33		WA060035	平墊圈	Washer	1	
34		2040315900	彈簧	Spring	1	
35		2040317200	連接棒	Tension Releasing Bar	1	

From the library of: Diamond Needle Corp



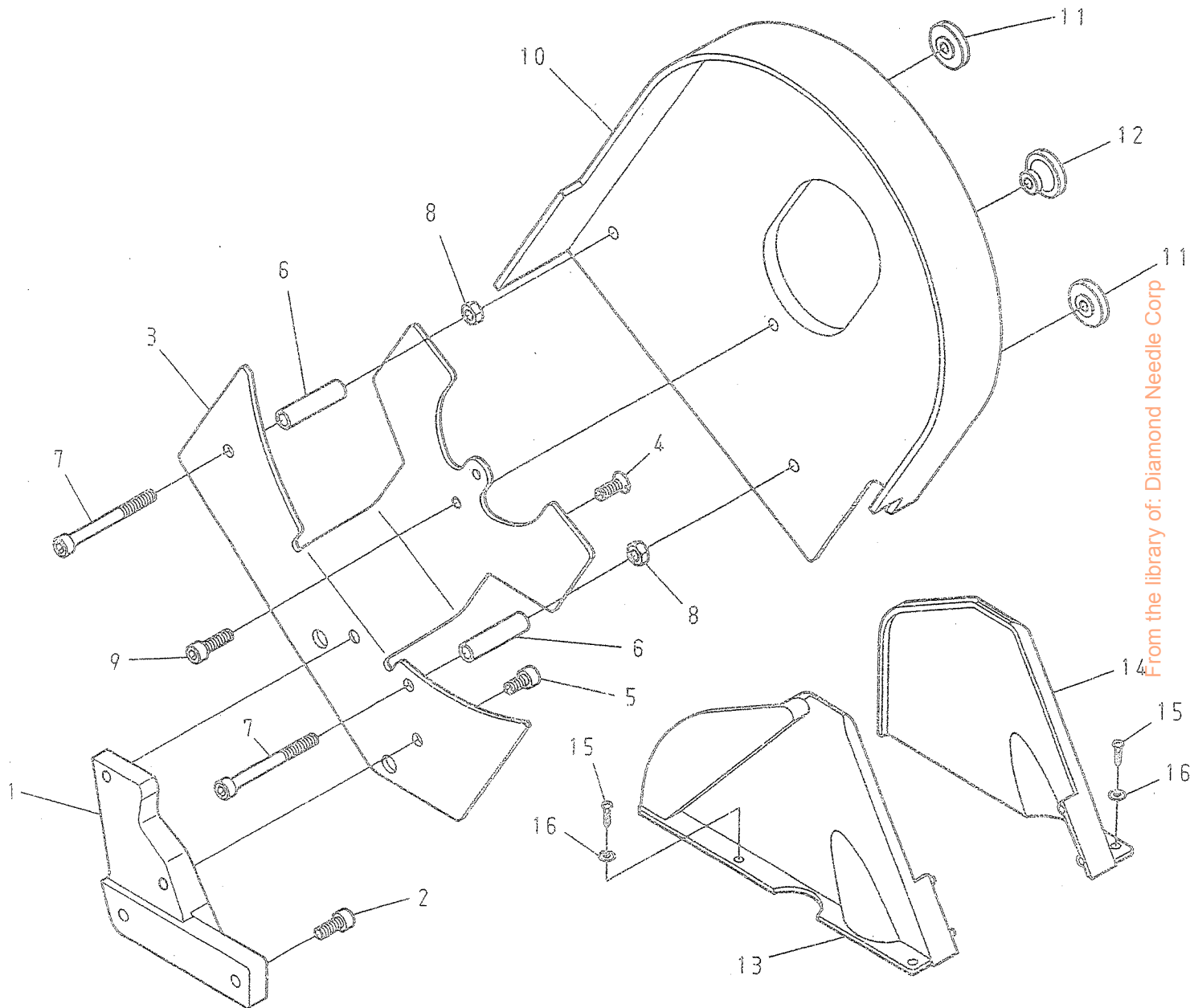


From the library of: Diamond Needle Corp

K. 2040 附件關係 ACCESSORIES

REF.No	NOTE	零件號碼 Part No.	零件名稱	Name of Part	件數 Q'TY	備註 Remarks
1		4710910900	罩頭蓋	Cover	1	
2		A7000-0A	工具袋	Accessory Box	1	
3		A7010-0A	螺絲起子(小)	Screw Driver (small)	1	
4		A7010-2A	螺絲起子(大)	Screw Driver (large)	1	
5		IN794#200	針	Needle (794 Nm=200-4)	4	
6		2040189410	定位保持板	Spacer	1	
7		2040189430	定位保持板	Spacer	1	
8		2040189440	定位保持板	Spacer	1	
9		2040189450	定位保持板	Spacer	1	
10		2040119000	枕木	Arm Support	1	
11		4710183200	梭仔	Bobbin	3	
12		F7022-0A	後鈕座	Rubber Hinge	2	
13		ZSC18001	螺絲	Screw 9/32-28 L=9.7	4	
14		2430911700	後鈕鉤	Head Hinge	2	
15		A7026-0A	防振橡膠	Vibration Preventing Rubber	4	
16		2040912000	下油槽	Oil Pan	1	
17		4710340800	S型銷	S-Plug	2	
18		4710341400	鎖	Chain	1	
19		TLA020	六角型螺絲起子2mm	Hexagonal Wrench Key(2mm)	1	
20		TRB06×07	開口板手(6×7)	Wrench (6X7)	1	
21		TRB08×10	開口板手(8×10)	Wrench (8X10)	1	
22		J7050-0A	線架	Thread Stand	1	
23		A7011-0A	鐵釘	Nail	10	
24		A7012-1A	油壺(中)	Oiler	1	
25		2040320105	捲線器組	Bobbin Winder	1	
26		ZMT05001	木螺絲	Wood Screw L=18	2	
27		WA059003	平墊圈	Washer $\phi 12 \times 0.7$ d=5.2	2	
28		4710113400	線柱	Needle Thread Guide Pin	1	
29		ZSL12003	螺帽	Nut 3/16-32	1	

From the library of: Diamond Needle Corp



From the library of: Diamond Needle Corp

L. 2040 皮帶蓋關係 BELT COVER COMPONENTS

REF.No	NOTE	零件號碼 Part No.	零件名稱	Name of Part	件數 QTY	備註 Remarks
1		2040336000	皮帶蓋土台	Belt Cover Base	1	
2		ZMJ06002	螺絲	Screw M6X1.0*15	2	
3		2040335600	皮帶蓋支持板	Belt Cover Mounting Plate	1	
4		ZMC06001	螺絲	Screw M6X1.0*16	1	
5		ZMJ06008	螺絲	Screw M6X1.0*12	1	
6		2040335300	皮帶蓋固定管	Belt Cover Stud	2	
7		ZMJ06021	螺絲	Screw M6X1.0*60	2	
8		ZML06001	螺帽	Nut M6X1.0	2	
9		ZMJ06004	螺絲	Screw M6X1.0*20	1	
10		2040335100	皮帶蓋 A	Belt Cover A	1	
11		ZMR06007	螺帽	Nut M6 × 1.0	2	
12		ZMR06006	螺帽	Nut M6 × 1.0	1	
13		2040335500	皮帶蓋 C	Belt Cover C	1	
14		2040335200	皮帶蓋 B	Belt Cover B	1	
15		ZMT04006	木螺絲	Wood Screw	4	
16		WA049006	平整圈	Washer	4	

From the library of: Diamond Needle Corp

M. 2040 零件號碼與頁數對照表 (1/3) NUMERICAL PARTS-LIST (1/3)

零件號碼 Part No.	頁數 PAGE	零件號碼 Part No.	頁數 PAGE	零件號碼 Part No.	頁數 PAGE	零件號碼 Part No.	頁數 PAGE
2040110604	11- 26	2040145420	11- 15	2040164500	17- 8	2040189410	25- 6
2040110900	3- 3	2040145430	11- 16	2040164900	15- 7	2040189420	19- 6
2040111000	3- 1	2040145440	11- 17	2040167200	17- 7	2040189430	25- 7
204011100C	3- 9	2040145450	11- 18	2040167600	17- 19	2040189440	25- 8
2040111100	3- 23	2040145460	11- 19	2040167900	17- 1	2040189450	25- 9
2040111200	3- 19	2040145470	11- 20	2040169204	9- 31	2040190104	7- 7
2040111300	3- 14	2040148000	11- 4	2040169500	17- 20	2040190210	7- 9
2040111600	3- 16	2040148000	11- 35	2040170104	15- 30	2040190220	7- 10
2040111700	3- 12	2040148000	15- 24	2040170304	15- 22	2040190230	7- 11
2040111800	3- 11	2040150100	13- 9	2040170900	19- 20	2040190240	7- 12
2040113100	3- 33	2040150200	13- 15	2040171800	15- 26	2040190250	7- 13
2040119000	25- 10	2040150400	13- 20	2040171900	15- 29	2040190260	7- 14
2040120104	5- 2	2040150500	13- 10	2040180300	19- 10	2040190270	7- 15
2040120200	5- 4	2040150604	13- 29	2040180500	19- 27	2040190300	7- 16
2040120400	5- 17	2040150704	13- 5	2040180704	19- 24	2040192100	7- 6
2040121000	7- 19	2040150804	13- 7	2040181400	19- 3	2040192300	7- 4
2040121300	5- 1	2040151000	11- 32	2040181604	19- 7	2040270100	9- 16
2040122000	5- 5	2040151100	11- 24	2040181800	5- 10	2040270200	9- 17
2040122300	5- 20	2040151700	13- 30	2040181900	5- 12	2040270400	3- 38
2040140100	7- 22	2040152500	13- 18	204018200A	5- 8	2040271100	9- 14
2040140900	7- 20	2040157104	13- 1	204018200B	5- 16	2040271300	9- 28
2040141704	11- 30	2040159900	13- 21	2040182200	21- 4	2040273000	9- 32
2040141900	9- 11	2040160100	15- 9	204018220A	21- 3	2040310100	23- 19
2040142304	9- 4	2040160500	15- 4	2040182300	21- 7	2040310300	23- 1
2040142500	11- 21	2040160600	15- 1	2040182400	21- 1	2040310300	23- 16
2040142700	11- 3	2040160700	15- 20	2040182500	21- 2	2040310400	23- 3
2040142900	11- 23	2040160800	15- 15	2040183000	21- 6	2040310504	23- 11
2040143100	9- 1	2040160900	17- 17	2040183500	19- 31	2040310600	23- 22
2040143300	11- 31	2040161104	17- 6	2040183800	19- 28	2040310610	23- 23
2040143500	13- 13	2040161200	17- 15	2040184100	19- 14	2040310800	23- 9
2040143600	11- 34	2040161300	17- 9	2040184200	19- 8	2040310900	23- 10
2040143700	11- 28	2040161400	15- 13	2040184300	19- 34	2040311004	23- 12
2040143800	13- 16	2040161800	17- 14	2040184400	19- 30	2040311100	23- 7
2040144400	5- 18	2040161900	17- 12	2040184500	19- 33	2040311200	23- 5
2040144600	11- 6	2040162000	17- 11	2040184600	19- 11	2040311300	23- 4
2040144704	11- 11	2040162100	17- 13	2040186600	19- 22	2040311400	23- 6
2040145410	11- 14	2040162200	17- 2	2040189300	19- 4	2040312000	23- 21

From the library of: Diamond Needle Corp

M. 2040 零件號碼與頁數對照表 (2/3) NUMERICAL PARTS-LIST (2/3)

零件號碼 Part No.	頁數 PAGE	零件號碼 Part No.	頁數 PAGE	零件號碼 Part No.	頁數 PAGE	零件號碼 Part No.	頁數 PAGE
2040312300	23- 29	4710181300	19- 1	TC14708200	19- 18	XP300150	3- 41
2040315400	23- 2	4710183200	19- 2	TC14712200	19- 25	YA040300	19- 38
2040315800	23- 17	4710183200	25- 11	TC16008200	11- 9	YD040014A	3- 35
2040315900	23- 34	4710340800	25- 17	TLA020	25- 19	ZMA04005	15- 17
2040317000	23- 27	4710341400	25- 18	TRB06×07	25- 20	ZMA05012	19- 32
2040317100	23- 25	4710910900	25- 1	TRB08×10	25- 21	ZMB03001	3- 13
2040317200	23- 35	A1025-0A	23- 18	WA040026	5- 15	ZMB03001	19- 12
2040317500	23- 30	A1077-0A	3- 18	WA049003	3- 26	ZMB04011	23- 24
2040320106	25- 25	A7000-0A	25- 2	WA049003	23- 13	ZMB04013	3- 32
2040335100	27- 10	A7010-0A	25- 3	WA049006	27- 16	ZMB04016	3- 25
2040335200	27- 14	A7010-2A	25- 4	WA059003	25- 27	ZMB05003	3- 15
2040335300	27- 6	A7011-0A	25- 23	WA059006	13- 4	ZMB05003	3- 17
2040335500	27- 13	A7012-1A	25- 24	WA060035	23- 33	ZMB05004	3- 20
2040335600	27- 3	A7026-0A	25- 15	WA06008	9- 5	ZMB05004	3- 24
2040335800	3- 31	BNHK0910B	7- 3	WA080007	11- 2	ZMB05004	15- 14
2040336000	27- 1	BNHK4512	5- 9	WA080022	7- 17	ZMB05012	15- 12
2040340200	13- 12	IN794#200	7- 23	WA089004	5- 21	ZMB05027	19- 29
2040340300	13- 8	IN794#200	25- 5	WH216002	5- 3	ZMB06020	5- 13
2040341700	13- 25	J7050-0A	25- 22	XA200046	15- 32	ZMB08005	11- 5
2040342300	13- 28	KC0305520	5- 7	XA200100	19- 16	ZMB08005	11- 37
2040350200	3- 21	LG4043-0A	9- 7	XA200150	3- 44	ZMB10002	17- 18
2040351504	3- 28	LG4044-0A	15- 18	XA200180	3- 43	ZMC03001	19- 5
2040351900	3- 5	RE000040	9- 30	XA200280	3- 36	ZMC06001	27- 4
2040352900	9- 24	RE000040	11- 36	XA200300	9- 19	ZMC08001	25- 13
2040353604	3- 37	RE000040	15- 25	XA200360	11- 39	ZMG05023	19- 36
2040353804	3- 40	RE000050	17- 21	XA200400	3- 30	ZMH04017	7- 24
2040353804	9- 23	RE000050	23- 26	XA200800	3- 42	ZMH05001	7- 2
2040354000	15- 8	RE000050	23- 32	XA300460	9- 27	ZMH05001	11- 10
2040912000	25- 16	RE000070	9- 2	XB130001	3- 22	ZMH05001	19- 19
2430160400	15- 3	RE000070	15- 10	XB215001	3- 27	ZMH05001	23- 8
2040911300	25- 12	RE000080	9- 15	XB400063	3- 8	ZMH05001	23- 15
2040911700	25- 14	RE000100	13- 6	XP300045	9- 22	ZMH05002	9- 29
4410142400	9- 9	SEN0400600	15- 6	XP300055	9- 26	ZMH05002	9- 34
4710113400	25- 28	TC09008200	7- 1	XP300060	19- 17	ZMH05002	15- 28
4710150300	13- 24	TC09508200	9- 20	XP300120	15- 11	ZMH05003	11- 29
4710151500	13- 25	TC10010200	9- 33	XP300100	11- 38	ZMH05006	9- 21
4710161600	17- 16	TC12710200	15- 27	XP300200	3- 29	ZMH06003	5- 6

From the library of: Diamond Needle Corp

M. 2040 零件號碼與頁數對照表(3/3) NUMERICAL PARTS-LIST (3/3)

零件號碼 Part No.	頁數 PAGE	零件號碼 Part No.	頁數 PAGE	零件號碼 Part No.	頁數 PAGE	零件號碼 Part No.	頁數 PAGE
ZMH06003	7- 5	ZMJ05017	7- 8	ZSD20009	9- 10		
ZMH06008	3- 39	ZMJ06001	3- 34	ZSD20009	11- 7		
ZMH06008	19- 21	ZMJ06002	17- 10	ZSD20011	9- 12		
ZMH06008	19- 26	ZMJ06002	27- 2	ZSK11050	19- 9		
ZMH06010	15- 2	ZMJ06004	15- 16	ZSL11002	19- 35		
ZMH06010	15- 21	ZMJ06004	15- 31	ZSL12003	25- 29		
ZMH06010	21- 8	ZMJ06004	27- 9				
ZMH06016	9- 18	ZMJ06006	13- 14				
ZMH06023	13- 27	ZMJ06008	27- 5				
ZMH06024	17- 5	ZMJ06009	5- 19				
ZMH08002	5- 24	ZMJ06009	13- 11				
ZMJ03001	3- 7	ZMJ06021	27- 7				
ZMJ03010	3- 6	ZMJ08003	5- 22				
ZMJ03010	13- 19	ZMJ08006	11- 1				
ZMJ04001	23- 14	ZMJ08010	19- 37				
ZMJ04002	11- 33	ZMJ08011	5- 14				
ZMJ04003	3- 2	ZMK06024	15- 23				
ZMJ04003	11- 22	ZMK06025	9- 3				
ZMJ04004	13- 22	ZMK08016	9- 13				
ZMJ04005	3- 4	ZMK08017	11- 13				
ZMJ04005	11- 25	ZML04006	13- 23				
ZMJ04005	13- 17	ZML06001	9- 6				
ZMJ04005	23- 31	ZML06001	27- 8				
ZMJ04008	5- 11	ZML08004	7- 18				
ZMJ04008	9- 25	ZML08004	11- 12				
ZMJ04008	21- 9	ZML08004	23- 20				
ZMJ04020	3- 10	ZMR06005	17- 4				
ZMJ05002	11- 27	ZMR06006	27- 12				
ZMJ05002	13- 3	ZMR06007	27- 11				
ZMJ05002	21- 5	ZMT04006	27- 15				
ZMJ05003	5- 23	ZMT05001	25- 26				
ZMJ05003	7- 21	ZSA16010	9- 8				
ZMJ05003	13- 31	ZSA16020	11- 8				
ZMJ05003	19- 23	ZSA16029	15- 19				
ZMJ05004	13- 2	ZSB09091	19- 15				
ZMJ05004	17- 3	ZSB15055	19- 13				
ZMJ05008	23- 28	ZSB16004	15- 5				

From the library of: Diamond Needle Corp

**Consolidated Sewing Machine Corp.**  
Website: [www.consew.com](http://www.consew.com)

**MAIN office**

131 W. 25th Street  
New York, NY 10001  
Tel: 212-741-7788  
Fax: 212-741-7787  
e-mail: [consew@att.net](mailto:consew@att.net)

**Miami, FL**

4013 N.W. 79th Avenue  
Miami, FL 33166  
Tel: 305-471-0200  
Fax: 305-471-0243  
e-mail: [miamisales@consew.com](mailto:miamisales@consew.com)

**Los Angeles, CA**

2320 South Hill Street  
Los Angeles, CA 90007  
Tel: 213-745-8844  
Fax: 213-745-8855  
e-mail: [lasales@consew.com](mailto:lasales@consew.com)